

AI VMS Mini



spark
Italian inSight

Custom-built solution for
small to medium-sized businesses

AI VMS Mini is a one-stop solution designed by Spark for small to medium-sized environments, including Residential areas, commercial buildings, parking lots, road surveillance, schools and factories. The AI VMS Mini is equipped with an Asus IoT server that supports 16 channels for surveillance, featuring high efficiency AI chips and cutting-edge VMS technology, providing users with a comprehensive solution.

ASUS IoT Mini Server

- 16 Channel recording
- Support Master/Slave
- Support ONVIF/RTSP video input
- Third party integration (LPR/eTag)
- FCC、CE、RoHs



AI VMS

- AI detection: human, vehicle, smoke, fire and cross-line
- Local/Remote IP configuration
- Dashboard
- Health Doctor
- LINE/Email notifications
- E-Map





Features



high-efficiency AI chip

Argo is a highly efficient surveillance system software, ensuring high-quality service. Our system adopts Kneron's AI chip, enabling precise and efficient detection.



Various and accurate AI detection functions

Supports human, vehicle, smoke*, and fire* detection. With diverse AI detection functions, personnel can complete tasks easily.

*Optional



Analog cameras seamlessly upgraded to AI function

There are still over 60% analog cameras today. With this device, existing cameras can be easily upgraded to AI functionality without replacement.



Health Doctor

Detect the abnormal signal, sent out notification and provide basic troubleshooting procedures. Even cameras in distant, personnel can find out and take action immediately.



Features



Alert Notification

Integrates with E-mail / LINE Notify for instant notifications via E-mail or LINE app during events, keeping personnel informed and enabling prompt off-site action to mitigate risks.



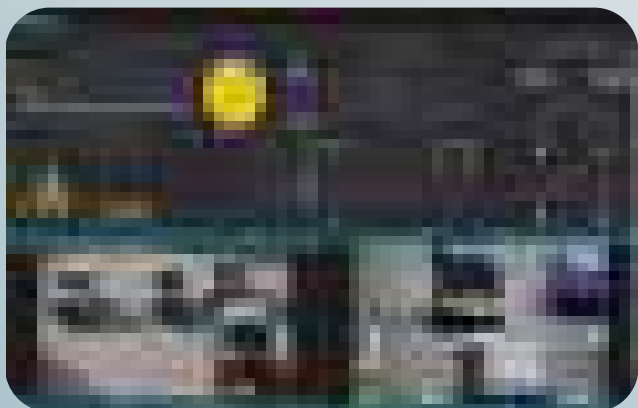
Advanced event configuration

Enhances security by reducing false alarms with multi-feature alert conditions (AND/OR) and linked cameras for different perspectives. It also supports customizable alarm procedures for better accuracy.



Cross-Line Detection Cross-Line Counting

Argo provides cross-line detection and counting capabilities, allowing for precise detection, multiple counting, data analysis, and real-time monitoring, effectively adapting to a wide range of security management requirements.



Dashboard

The Argo software can visualize camera image data, presenting the information in a graphical manner. Users can adjust the data dashboard according to their needs and preferences, offering a high level of customization and flexibility.

Features



spark
Italian inSight



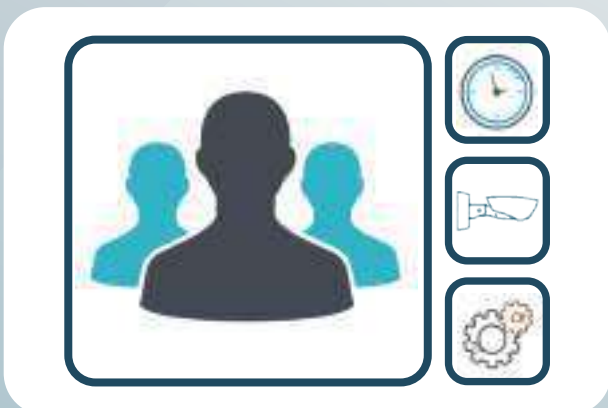
E-map

Supports multi-layer electronic maps with configurable device position and angle to simulate real surveillance scenario. When an event occurs, relevant cameras will automatically trigger alerts and display real-time footage, aiding personnel in responding swiftly to incidents.



Vehicle Access Control

Argo supports LPR cameras and eTags, offering automated access control including real-time license plate registration and classification. Users can make notes for specific vehicles and create customized lists (e.g., VIP, blacklists, whitelists) for more effective access management.



Advanced User Management

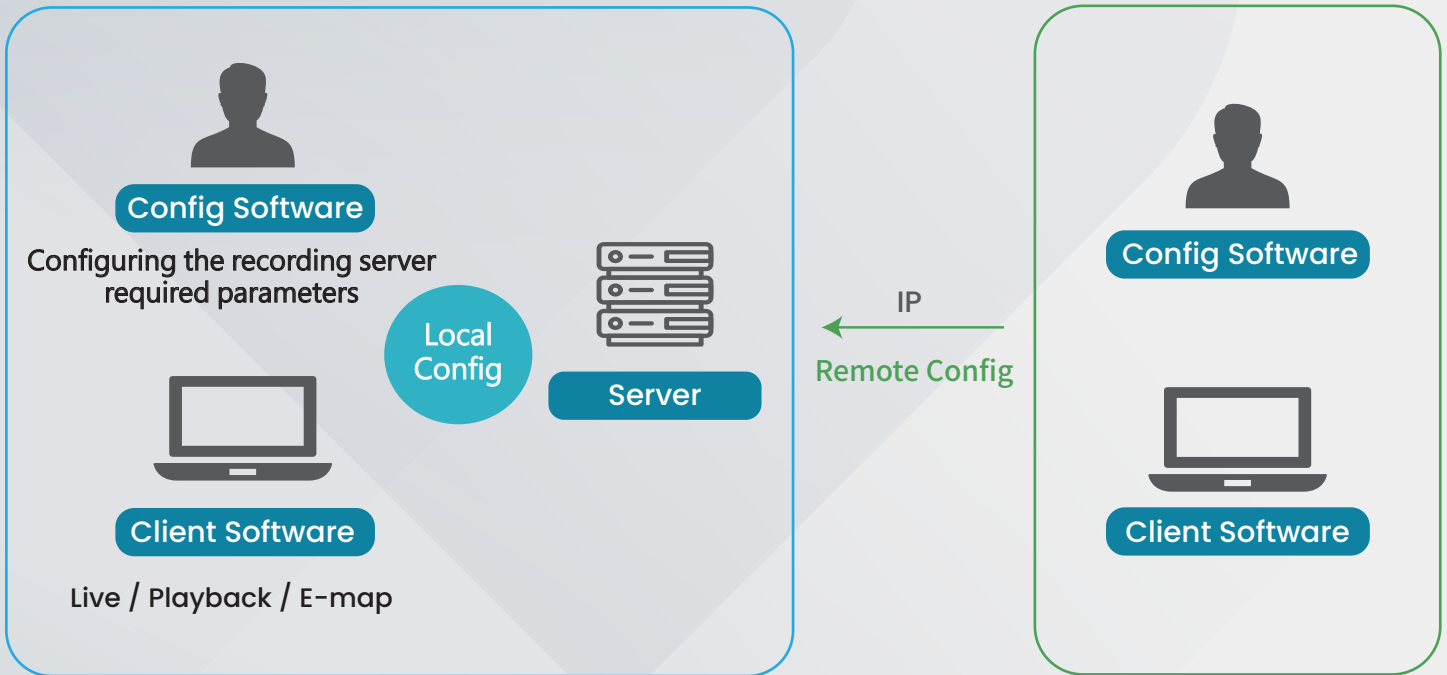
Administrators can tailor user privileges as required, including by device, functions, and time schedules. Furthermore, settings can be stored in groups for swift application of the same privileges to new users.



System

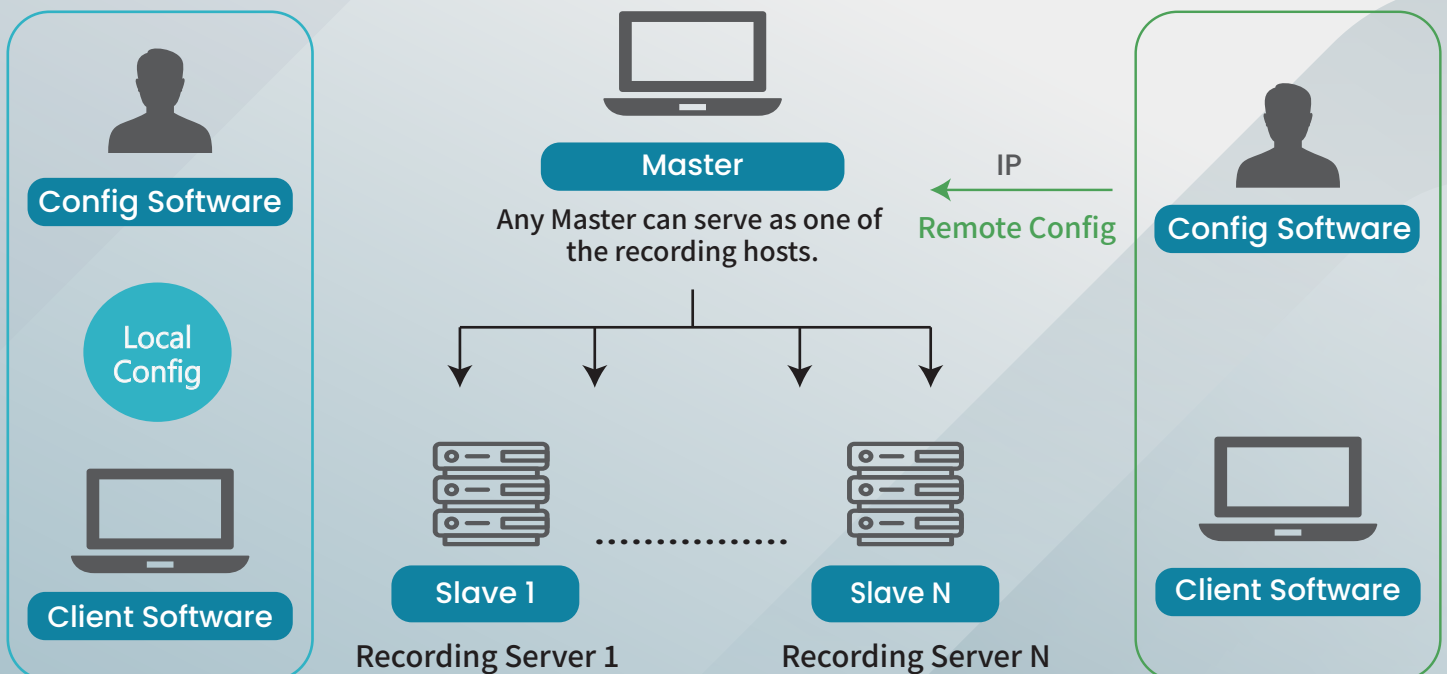
Standalone

Users can configure the required parameters locally/remotely.



Master/Slave

In addition to the Master server, users can easily add several servers as slave servers. With this structure, users can monitor and manage multiple screens at the same time.

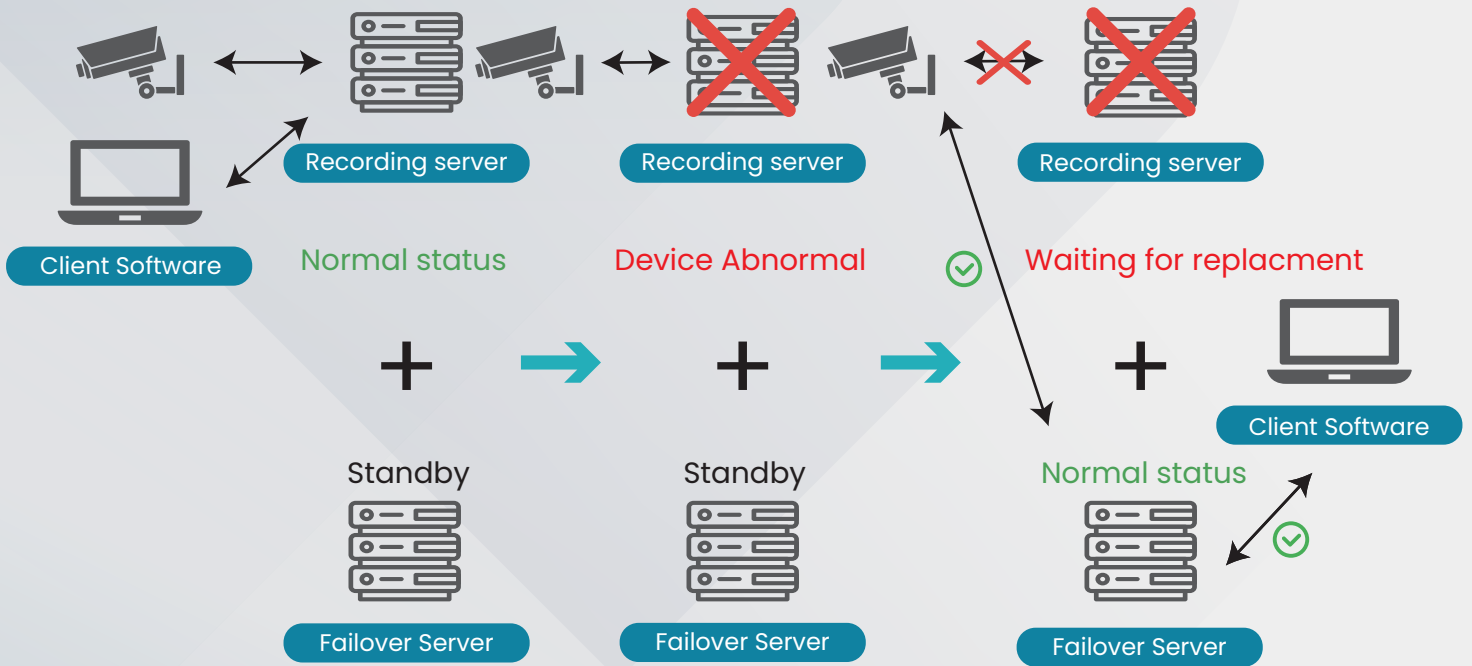




Failover

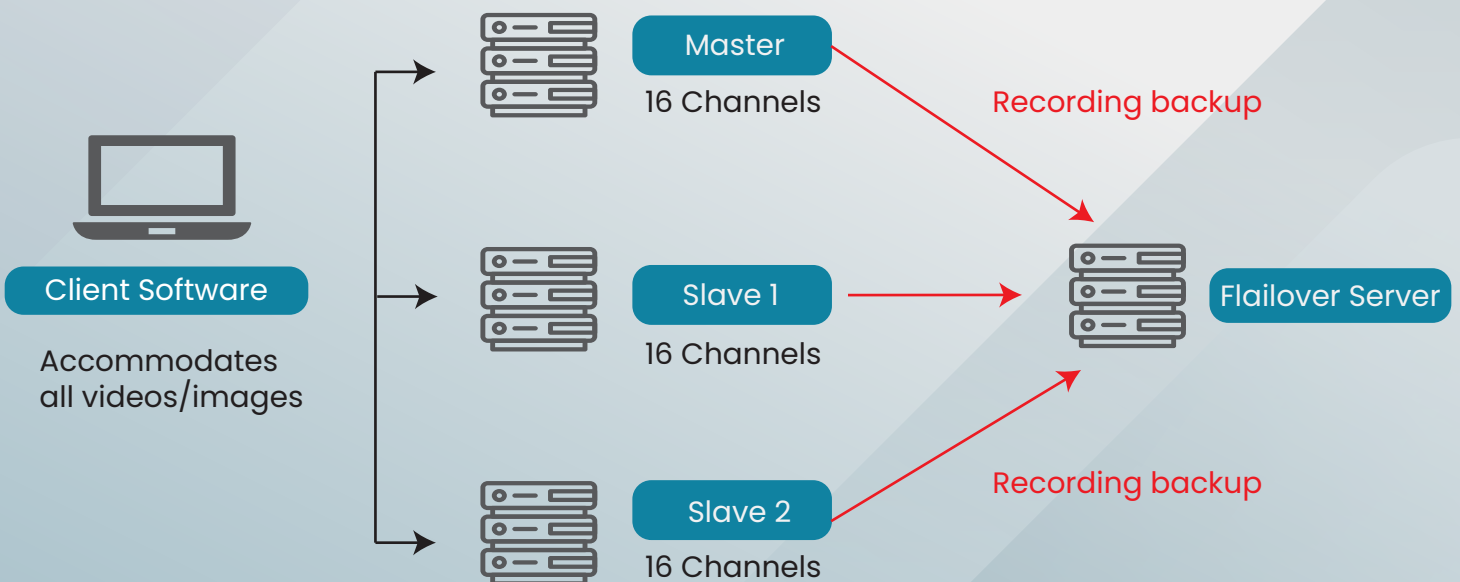
Standalone N+1

When the original recording device malfunctions, the failover server will be activated.



Master/Slave N+1

When any recording server malfunctions, the backup recording device will be activated





Specification

AI Management

Image Recognition	<ul style="list-style-type: none"> -Human detection / Vehicle detection(car , motorbike , truck,bus , bicycle) -Object detection -Density detection -Loitering detection -Cross-Line detection -Cross-Line counting 	<ul style="list-style-type: none"> -Smoke detection (optional) -Fire detection (optional) -License plate recognition (optional)
-------------------	---	--

Platform Management

Dashboard	<ul style="list-style-type: none"> -Heatmap -Vehicle classification: car , motorbike , truck , bus , bicycle 	<ul style="list-style-type: none"> -People counting -Vehicle counting
E-map	<ul style="list-style-type: none"> -Unlimited e-map layers -Unlimited device to map -Event pop-up -Real-time display of license plate 	<ul style="list-style-type: none"> -Rephase device position -Rephase device angle -Color-coded camera alarm status differentiation
Health Doctor	<ul style="list-style-type: none"> -Spark AI failure -Devices failure -Network disconnection 	<ul style="list-style-type: none"> -Disk failure -CPU usage critical
Alert notifications	<ul style="list-style-type: none"> -E-mail -LINE Notify -Grouped, Scheduled, Customized with content. -LINE notify image (Interval 1-300 secs) 	

General

Compatibility	Compatibility Spark cameras , Omnieye cameras , 3rd party cameras ³	
Operating system	Win 11 IoT , Support for multi-monitor output	
Video compression	H.265 , H.264 , MJPEG	
Audio support	Two-way audio (client)	
Liveview	<ul style="list-style-type: none"> -Liveview -4 channel views (16 chs recording) -Customizable layout -Multi-stream management 	<ul style="list-style-type: none"> -Event pop-up -Manual snapshot and recording -PTZ control
Recording	<ul style="list-style-type: none"> -16 channel recording (Max. 32 chs recoring) -Continuous/Scheduled recording -Event recording 	<ul style="list-style-type: none"> -Edge recover -Event pre/post recording
Playback	<ul style="list-style-type: none"> -Customizable layout -Instant playback -Synchronized playback -Date and timeline visualization 	<ul style="list-style-type: none"> -Event playback -Playback speed controls -Manual snapshot
Export	<ul style="list-style-type: none"> -Export multiple video with selectable time range -Snapshot and videos 	<ul style="list-style-type: none"> -support MOV, MKV, MP4, AVI, Spark format -Support watermark
Certification	CA / DLAP	

Event management

Event triggers	<ul style="list-style-type: none"> -Configurable based on device and schedule -AND/OR trigger conditions -Digital input -Camera analytics¹ -AI analytics 	<ul style="list-style-type: none"> -System related events -User related events -Device and network related events -Third party events (LPR, eTag)
Event actions	<ul style="list-style-type: none"> -Configurable alarm SOP -Configurable alarm recipient -Recording (support Pre/post recording up to 300 secs) -Digital output 	<ul style="list-style-type: none"> -LINE notification -PTZ preset -PTZ tour -Linked camera and pop-up image

Remark:

¹ Only supports assigned camera.

² Applicable to previously integrated camera models.

³ Third party camera compatible through ONVIF and RTSP.



Specification

System management

User privilege	-Configurable based on camera, function and schedule	
Camera management	-Support basic camera settings	
Third party device management	-Supports 24GHz radar, which can be used in conjunction with cameras for perimeter protection. -I/O module -LPR Camera	-eTag reader -LED display

Server

Model	SR-S-AIVMS-Mini
Processor	- Intel® i5 Processor, 12500E
Display interface	-DP × 1 -HDMI ×2
Integrated graphics	- UHD Graphics 770
I/O port	-USB 3.2 ×4 -USB 2.0 ×4 -Audio Jack ×2 -1 PCIe 4.0 x16 -2 M.2 1× M.2 with E key, type 2230 for WIFI / BT device(PCiE & CNVi) 1× M.2 with M key, type 2242 / 2260 / 2280
Memory	SO-DIMM, DDR4 16GB(Max.64GB)
HDD	1×3.5" or 2×2.5" or 1×3.5" + 1×2.5" HDD, Max. supports 16T 3.5" recording specific disc.
Network	RJ-45 (10/100/1000Mbps) Network Ports ×2
Fan	Yes , CPU/Internal case
Power	Flex ATX 250W Gold
Dimensions	255×230×88 mm (W×D×H)
Certification	FCC / CE / RoHs
Operating Temperature	0°C ~ 60°C